

UTILITY TRAILER

Owner's Manual

Le Manuel Propriétaire / Manual Del Propietario

SnowBear Limited
155 Dawson Rd.
Guelph, ON
N1H-1A4
www.snowbear.com
1-800-337-2327

**8ft
Trailer**

Read the owner's manual over carefully before you begin using your trailer.

4011

The following pages contain the assembly diagrams and complete parts list accompanied by SnowBear Trailer operating instructions.



IMPORTANT SAFETY CHECK LIST

Trailers are generally not used everyday. Your trailer may sit for extended periods of time between uses making it very important to check all components thoroughly before each use. Following these simple instructions will maximize the life of your trailer and help you safely transport your cargo.

DO NOT ABUSE THE TRAILER. Trailer performance is best if you follow the guidelines set forth in this manual. Do not force the trailer to do a job it's not designed for. Know your trailer; learn its applications and limitations.

1. Make sure the towing vehicle as well as the hitch is capable of towing the trailer. Check your vehicle owner's manual for trailering ratings.
2. Inspect the trailer and all it's parts before each use.
3. Check the operation of all lights. Operating lights are mandatory on a trailer.
4. Check to ensure Wheel Bolts are tight. Torque to 80 ft.-lbs. Re-tighten after the first 50 miles or 80 kilometers.
5. Check the tire pressure. Maximum 80 PSI (552 KPA) when carrying the maximum rated load.
6. Re-pack the wheel bearings every 2000 miles or 3200 kilometers or a minimum of once every year.
7. Check that the trailer coupler is fastened securely onto the trailer ball. The trailer ball must be a 2" ball.
8. Make sure the safety chain is attached to the trailer and the towing vehicle.
9. If your trailer has an optional side kit make sure all bolts and pins are in place before transporting your trailer.
10. Do not exceed the Gross Vehicle Weight Rating (G.V.W.R.) which is shown on the trailer serial / certification label.
11. Balance and secure the load on the trailer. See "Trailer Loading" section in this manual.
12. Lubrication of the coupler, springs and the tilt mechanism should be done periodically to stop corrosion and keep parts moving freely.



DANGER

- KEEP CHILDREN AWAY. Be sure children are kept a safe distance from the trailer operating area.
- NEVER sit or ride on the trailer. Serious injury or death could occur.
- EXERCISE EXTREME CAUTION WHEN TILTING THE TRAILER. There are many areas of the trailer where injury can occur if used improperly. The trailer may tilt quickly and unexpectedly during the loading and unloading process. The tilt option should not be used for heavy loads.
- Ramps should be used for loading heavy items.
- DO NOT drive with the trailer in the tilted position.
- DO NOT load more than one all-terrain vehicle on to this trailer.
- If the trailer is incorrectly attached to the vehicle, it could pull away from the vehicle and fall off.
- Secure trailer to the towing vehicle before transportation. Make sure coupler is locked and the safety chains are attached to the trailer and the vehicle.
- Secure your cargo into the trailer properly and in compliance to local laws.
- When driving do not exceed the speed limit. Braking time can be considerably longer when a vehicle is towing a loaded trailer.
- Any modifications made to the trailer or parts of the trailer will void the trailer warranty and release SnowBear LTD. of any responsibility for damages, injuries or accidents incurred.

FEATURES (See Fig 1)

A. Extendible Tongue

1 = Regular Position 2 = Extended Position

The tongue can be installed in two positions. The Extended position will allow the use of the optional extension / side kit. While the Regular position will allow the trailer to take less space when in storage.



How To:

The trailer will need to be supported to allow the tongue to be changed from underneath the frame of the trailer. Remove the two 5/8" x 1 1/2" Hex Bolts and Lock Nuts at the back of the tongue. Slide tongue until the holes at the back of the tongue lines up with the middle tongue brackets. Then re-install the two 5/8" x 1 1/2" Hex bolts and Lock nuts. Slide the extra wire back into the tongue after changing the tongue position. The 3/16" Hitch Pin and 5/8" L-bolt do not need to be removed as the tongue will slide forward or back while this pin is still in position.

B. Sliding Axle

1 = Back Position 2 = Front Position

This SnowBear trailer incorporates our unique sliding axle design. This innovative feature allows the user to control how much of the trailer's load is distributed to the vehicle. The benefits of this feature are improved handling under low load conditions and reduced tongue weight under heavy load conditions.



How To:

Support the back of the trailer with blocks then use a jack on the tongue to lift the trailer so that the tires are about an inch off the ground. Remove the 9/16" x 3" bolts along with the trailer fender. Slide the axle, spring and tire assembly to the desired location. Reinsert the four 9/16" x 3" hex bolts through the fender and spring then into the frame channel and secure with the 9/16" lock nuts. You will need to lower the trailer to line up the front hole on the spring. The back bolt goes under the leaf of the spring to hold it against the frame. Make sure all parts are secure before you use your trailer.

Note: For general use you may wish to leave the axle in a fixed position. In this case the preferred axle location would be in the forward position. For heavy loads axle **must** be in the in the **forward** position.

Note: Axle is in the back position when shipped.

C. Tilt

1 = Extended Position (Tongue) 2 = Regular Position (Tongue)

The SnowBear trailer has a tilting option to help with loading and unloading of cargo.



How To: First make sure the trailer is attached to the towing Vehicle. Remove the front Hitch Pin and L-Bolt on the tongue, this will allow the trailer to tilt.



CAUTION WHEN TILTING THE TRAILER. The trailer may tilt quickly and unexpectedly during the loading and unloading process.

Note: Axle is shown in the forward position. In this position the trailer will have a better tilting angle.

Note: It is not necessary to tilt the landscape versions of this trailer as the gate can be used as a ramp instead. The 5/8" Tilt Bolt and pin can be replaced with a 5/8" x 4" Hex Bolt and Lock Nut.

PARTS LIST (See FIG 2)

Item #	Description	Part #	Qty.	Item #	Description	Part #	Qty.
1	8' Trailer Frame - Black	41445-B	1	17	U-Bolt 3/8-16 -for C Channel	79009	4
2	7' Trailer Tongue Wide - Black	41184-B	1	18	3/8-16 x 1 1/2" Hex Bolt	71510	1
3	69" Axle c/w Spindle and Hub	41218-B	1	19	3/8 Flat Washer	71580	1
4	5.30 x 12 Class C Tires	41210	2	20	3/8-16 Lock Nut Center 2-Way	71595	9
5	Round Fender -7000 Series Blk.	41181-B	2	21	1/2-13 x 3" Hex Bolt	72525	2
6	1100 lb. Slipper Spring	41222	2	22	1/2-13 Lock Nut Center 2-Way	72595	2
7	Treated Plywood - 15 5/8 x92"	41262	2	23	9/16-12 x 3" Hex Bolt	72725	4
8	Trailer Coupler 2"	41250	1	24	9/16-12 Lock Nut Center 2-Way	72795	4
9	Trailer Safety Chain	41255	1	25	Wheel Bolts 1/2" N/F	78500	10
10	Tail Light Left/Drivers Side	41231	1	26	#6 Hitch Pin 3/16" Wire	79070	1
11	Tail Light Right/Pass. Side	41232	1	27	Tongue Locking Pin	79003-Z	1
12	Marker Light for the Trailers	41233	2	28	1/4-20 Hex Flange Nut	71100	6
13	180" Trailer Wiring Harness	41229	1	29	5/8-11 x 1 1/2 Hex Bolt	73010	2
14	108" 18 ga. Brown Wire	41243	2	30	5/8-11 Lock Nut Center 2-Way	73095	2
15	License Plate Holder	41236	1	31	3/8 x 5/8" Thread Cutting Bolt	78090	1
16	Spring Attachment Plate	41123-Z	2				

Replacement Lenses

Rear Red Lense (Large)	41237	Marker Lense (Orange)	41239
Rear Red Lense (Small)	41238		

ONLY USE ORIGINAL EQUIPMENT PARTS AND ACCESSORIES. Consult SnowBear for the recommended accessories. The use of improper accessories may cause hazards or injuries.

LIGHTING & WIRING MAINTENCE (See FIG 3)

WIRING LEGEND

Symbol	Color	Description	Operation	
G	Green Wire	Passenger Side (Right)	Right Signal	Brake
B	Brown Wire	Running Lights	Taillight Marker	Yellow Side Marker
Y	Yellow Wire	Driver Side (Left)	Left Signal	Brake
W	White Wire	Ground	Trailer Ground	

NOTE: Brake light goes out on the side that is signaling.

- Lower filament (Brighter light) = Brake & Signal
- Higher Filament (Dimmer Light) = Running Lights

To test vehicle wiring;

You will need a 12v light tester. Attach the wire clamp of the tester to the ground wire on the vehicle plug (see FIG 3). Then touch the tester pin into one of the vehicle plug contacts. Turn on the corresponding vehicle operation i.e. Running lights. This will illuminate the tester light if the vehicle wiring is correct. Follow this same procedure for the signal and brake lights.

To test the Trailer wiring;

Once you have confirmed that the vehicle trailer plug is operating properly, connect the trailer plug to your vehicle. Proceed to test each of the lights and power leads using your 12v light tester. Follow the wiring legend and diagram to test each corresponding wire for power when trailer light is not operating.

Always be sure to check your brake, running and signal lights before each use. Make sure that all of your connections are solid and that all wiring is in good condition.

Note: Bare, striped or pinched wire will cause a short in the trailer, which will cause the vehicle fuse to blow. A solid ground is required for your lights to work properly. All contacts must be to bare metal. Light covers should be well maintained and kept clean. Be sure that your lights are always visible, not obstructed by your load.

LOADING YOUR TRAILER (See FIG 4)

A/B. Distribute the weight evenly.

C. Center the load over the axle, keeping about 10% of the weight on the tongue. (If vehicle wheels are not on a crossbeam you will need to add wood to the floor to support each axle).

D. Center the load from side to side.

E. Always secure your cargo into the trailer properly and in compliance to local laws.



CAUTION

Do not build your trailer load higher than 3'. Higher loading will affect trailer handling due to increased wind resistance. This may cause violent movements, accidents and serious injury.

TRAILER CAPACITY:

Never overload your trailer. Each trailer has a maximum payload that should not be exceeded. Overloading your trailer could cause serious damage to your trailer as well as the towing vehicle. Please refer to your trailer serial / certification label located on the frame of the trailer for capacity details.

The Gross Vehicle Weight Rating (G.V.W.R.) is:

The Weight of the Trailer + The Maximum payload the trailer can carry. The trailer weight and the payload must not exceed this (G.V.W.R.) weight rating.

Be sure that any load carried in your trailer does not extend beyond the frame of your trailer. Never place loads on one side only.

Tongue Weight

The tongue weight is 10% of the load (this does not include the weight of the trailer).

The load is divided so that 90% of the load is over the axle and 10% is over the tongue.

TRAILER COUPLER (See Fig 5)

A = Locked

B = Unlocked

Item #	Description
1	2" Trailer Coupler
2	Locking Handle
3	Channel Lock
4	Adjustment Nut
5	2" Trailer Ball (Not included)

To adjust coupler to ball;

Set coupler and tongue on to the 2" trailer ball on your vehicle.

Raise the locking lever, push up on channel lock and turn nut to tighten or loosen the coupler.

Proper adjustment is obtained when coupler is as tight as possible on the ball and locking lever can still be opened and closed.

Before towing your trailer be sure to check the capacity of your trailer hitch on your vehicle (never exceed this or your trailers capacity). The SnowBear Trailer is equipped with a 2" coupler and must be used with a 2" trailer ball. **Make sure that the trailer ball is completely engaged in the coupler ball**

WHEEL BEARING & HUB ASSEMBLY (See Fig 6)

NOTE: Bearings should be re-packed every 2000 miles or 3200 kilometers.

Item #	Description	Part #	Qty.	Item #	Description	Part #	Qty.
1	1" Axle Bearing Kit	79515	1	1E	1" Axle Castle Nut	79502	1
1A	Bearing Race (Press Fit)		2	1F	3/16" Cotter Pin	79503	1
1B	1" Bearing		2	2	Hub (bare) (w/ bearing race)	89124	1
1C	Grease Seal		1	3	Axle c/w Hubs and bearings	41218-B	1
1D	2" Axle Dust Cap	79501	1				

Part # 79515 Axle Bearing Kit includes all parts 1A to 1E.

Note: Part 1A Bearing Race is press fit into the Hub and may not need to be replaced when changing bearings.

Re-packing Wheel Bearings

1. Loosen wheel bolts (Do not remove!).
2. Support trailer so wheels are off the ground.
3. Remove bolts and wheel.
4. Disassemble hub (See Figure 3)
5. Clean hub and pack bearings with wheel bearing grease.
6. Re-install bearings, nut and cotter pin.
Caution: DO NOT over tighten nut. The hub must turn freely and without play.
7. Re-attach bolts and wheel. (Torque to **80 lbs.**)

TRAILER LICENSING

In order to register your trailer you will need to have either the NVIS form in Canada or the Manufacturers Certificate of Origin in the US filled out and signed by the dealer transferring ownership to you. **This form is found in your trailer manual package.** Take this form along with the bill of sale (cash register receipt) to your local Department of Motor Vehicles or Ministry of Transportation licensing office. Once you pay the appropriate fees you will be issued a title or registration and license plate. Some states or provinces may require inspection of the assembled trailer before issuing a title, registration, or license.

If you require any further information regarding this issue please call your local Vehicle License issuing office or SnowBear Customer Service at;
1-800-337-2327.

US Residents

If you believe that your vehicle has a defect , which could cause an accident, personal injury or death, immediately inform the National Highway Traffic Safety Administration (NHTSA) in addition to notifying SnowBear Limited.

If NHTSA receives similar complaints, or finds safety defects existing in a group of vehicles it may open an investigation or order a recall and remedy campaign. However, NHTSA cannot become involved in individual problems between you, your dealer, or SnowBear Limited

To contact NHTSA, you may either call the Auto Safety Hotline toll-free at 1-800-424-9393 (or 366-0123 in Washington, DC area) or write to: NHTSA, U.S. Department of Transportation, Washington, DC 20590.

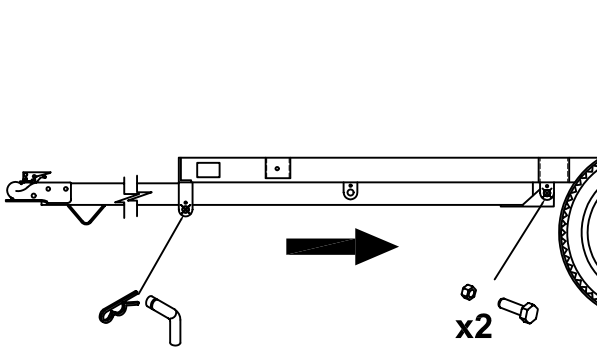
FEATURES

For instructions see "Features" section in this manual.

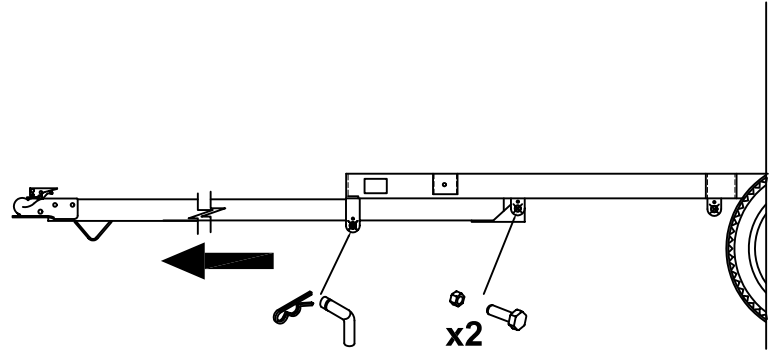
1

A

1

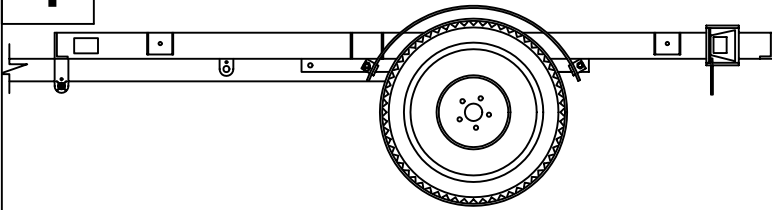


2

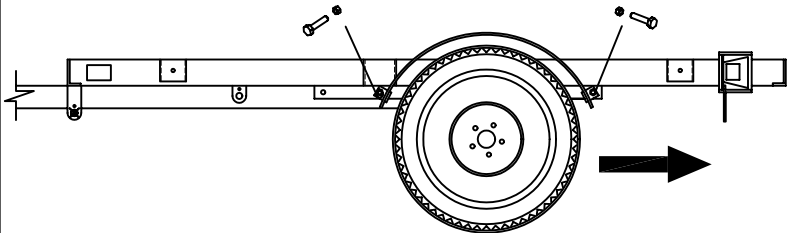
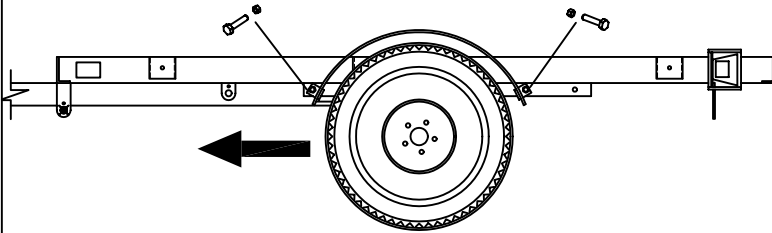
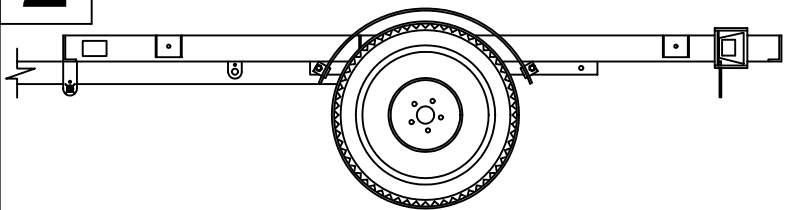


B

1

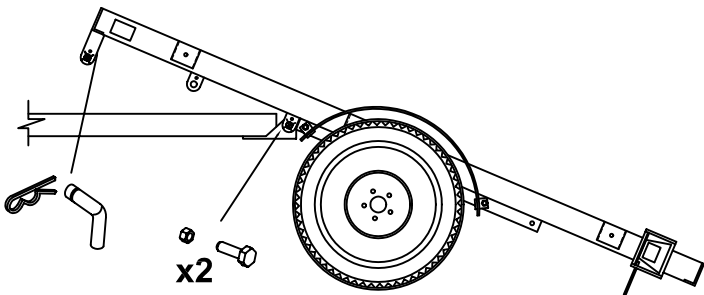


2

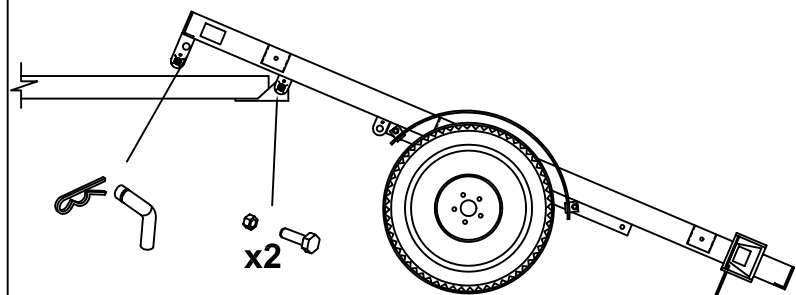


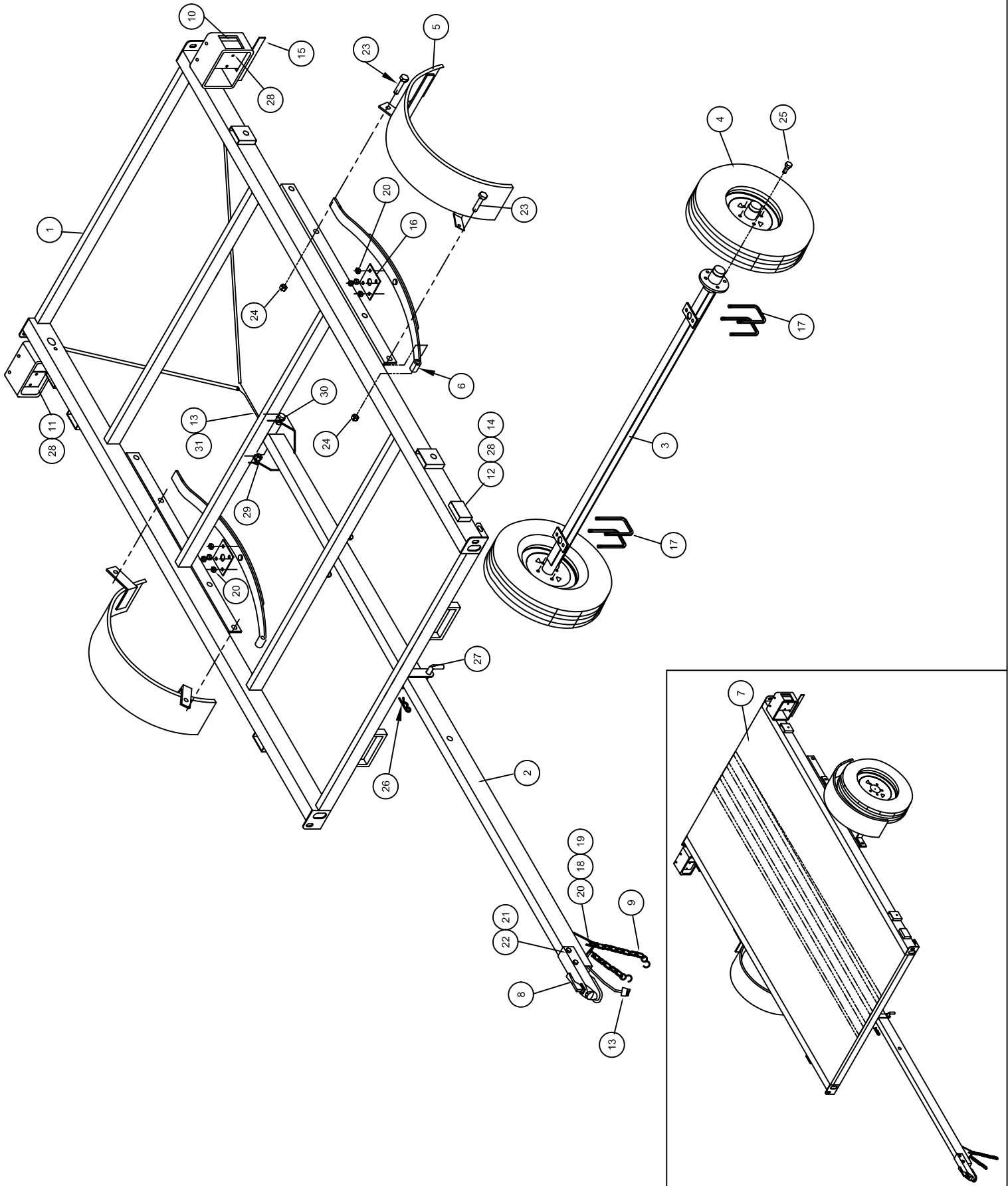
C

1



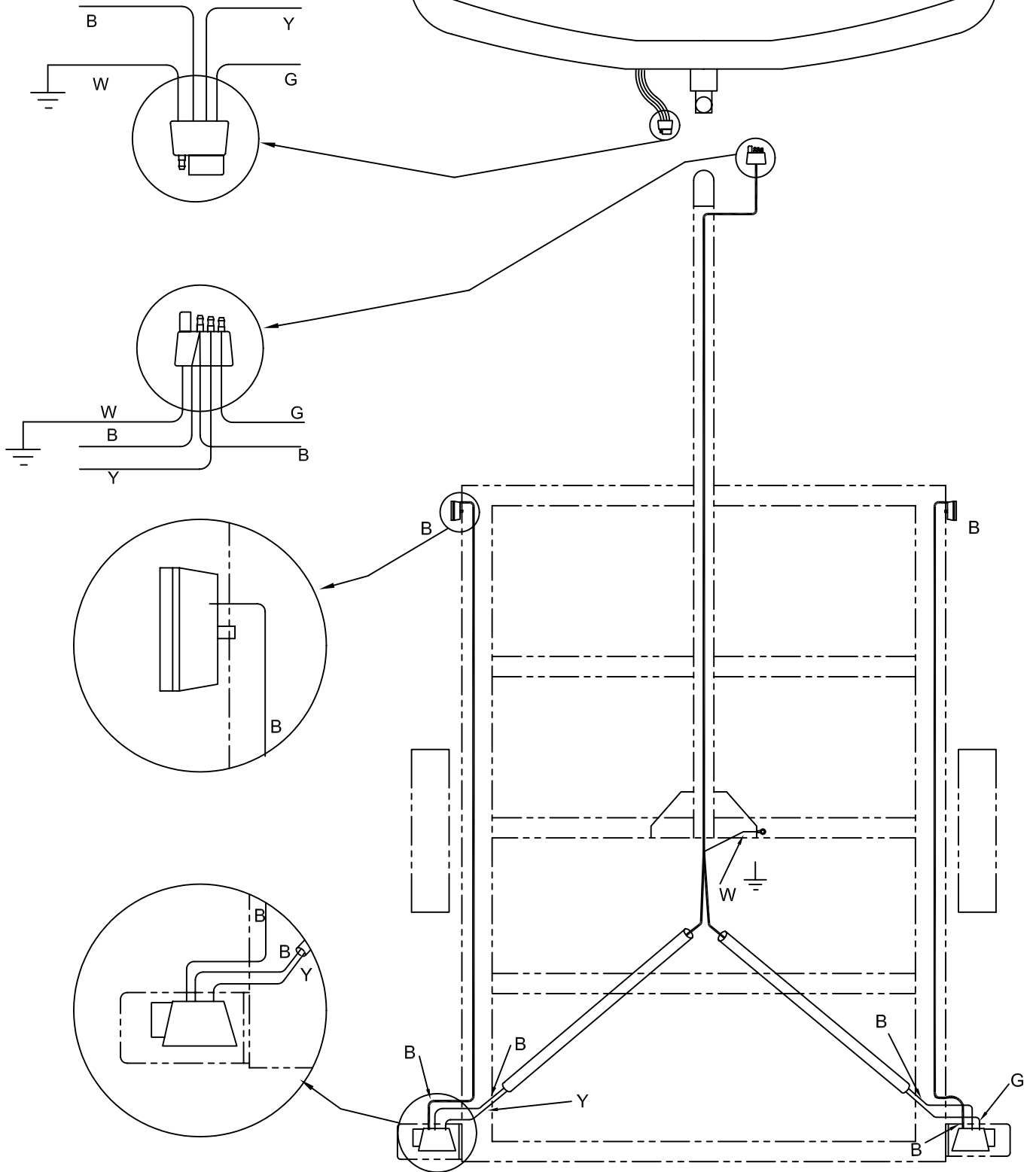
2





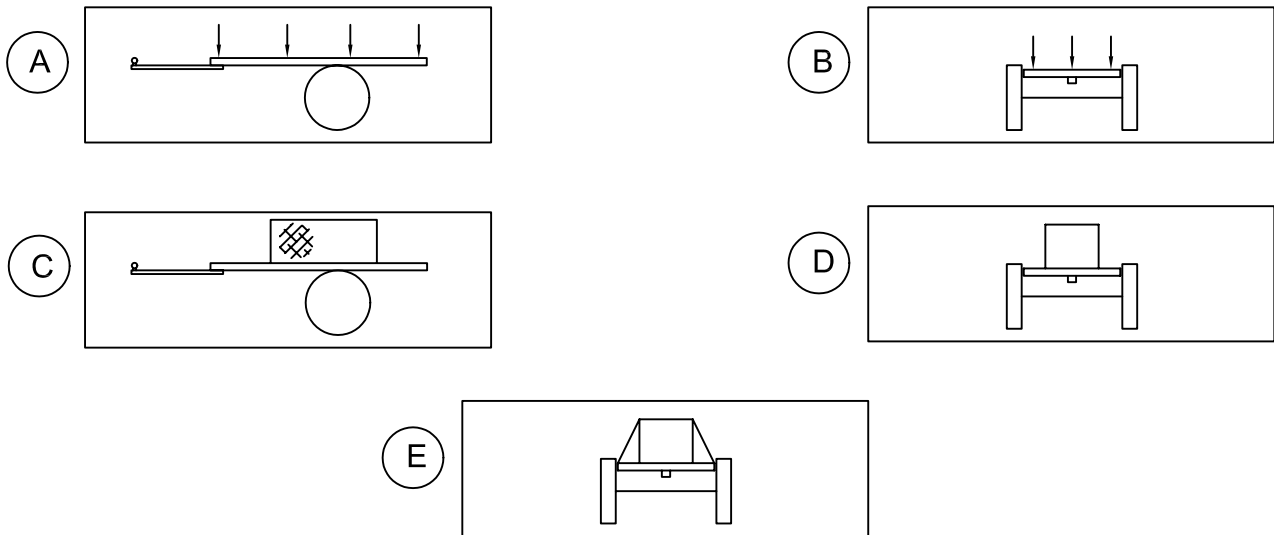
WIRING

3

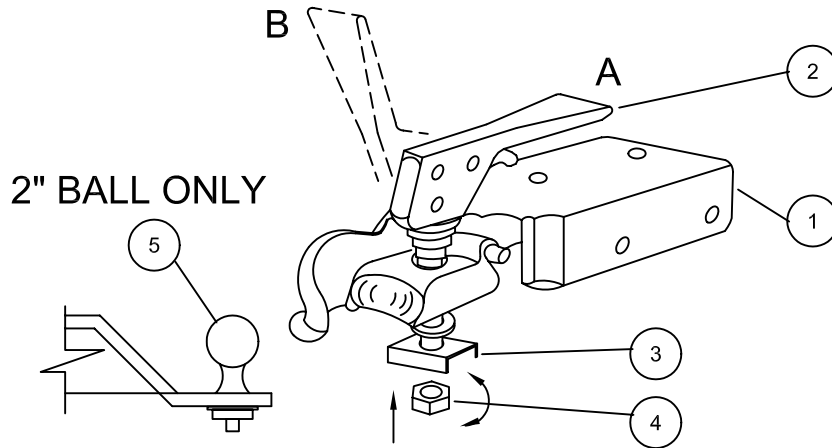


TRAILER LOADING INSTRUCTIONS

4



5



6

1" HUB AND BEARING ASSEMBLY

